

DISPLAY



UCBS

Umbono Corporate Branding & Services (PT) Ltd.

SWITCH YOUR BRAND ON

At **BARRON**, we believe in providing the best products for your brand to tell its story. That's why when it comes to quality, service and price, we're always able to switch your brand **ON**.

The **BARRON** Philosophy:

ON is up.

ON is right now.

ON is upbeat.

ON is can-do.

ON works.

ON solves.

ON builds.

ON serves.

"ON" is your brand.

Switched **ON**.

BARRON. Switch your brand **ON**.



ON

BRAND-ABLE[®] SOLUTIONS

Spotlight on your brand.

BARRON serves to help build brands, which is why we consistently build **ON**, grow and enhance our product offerings. Our **ON** going approach to empowering you with the best solutions has led us to introduce a 360 degree Brand-Able[®] solution for your business.

BARRON SOLUTIONS

- **ON** Apparel: Shirts, trousers, golfers, T-shirts, winter wear and more.
- **ON** Workwear: Hi-vis, conti suits, safety footwear, chefwear and more.
- **ON** Sport: Teamwear, soccer, rugby, netball and more.
- **ON** Headwear: Corporate, trendy and outdoor caps and beanies.
- **ON** Gifts: Bags, office accessories, technology, leisure and outdoor and more.
- **ON** Display: Flags, gazebos, banners, signage and more.
- **ON** Branding: Embroidery, screen printing, laser engraving, digital and more.



ON

VALUE ADDED SERVICES



Product lifetime guarantee

We are proud to introduce our ON Display Product Lifetime Guarantee. The BARRON Limited Product Lifetime Guarantee covers manufacturing defects in materials and workmanship, for the life of the product, provided all instructions are adhered to.

The lifetime guarantee is only applicable on hardware purchased from the BARRON Display range and products eligible for warranty are covered under warranty, to the original owner, for the lifetime of the product.

The FIVE (5) year ON Display Lifetime Guarantee will apply to the Fabric Frame (Wall Mounted) and the Gazebo range. Our free standing Fabric Frame, Outdoor Banner range (Fibreglass Rod only) and Umbrella hardware will carry a THREE (3) year ON Display Lifetime Guarantee. The ON Display Lifetime Guarantee can be purchased for an additional fee, prior to conclusion of the sale. If an ON Display product covered by the relevant guarantee fails due to a manufacturing or materials defect we will repair the product without charge, or replace it, at our discretion at no additional cost to the original owner. Only original, unaltered and unmodified materials and workmanship are covered by this policy. The guarantee does not cover damage caused by accident, improper care, negligence, normal wear and tear, or the breakdown of materials over extended time and use. Damage not covered under guarantee may be repaired for at a reasonable rate and a fee will be charged for return shipping.

For guarantee evaluation, your product must be returned directly to our head office guarantee department. All shipping to and from must be pre-paid and insured by the original owner, Barron cannot be held liable for loss of in or outbound packages. The original owner must present the guarantee document with the return. Custom products are final and are not eligible for returns, exchanges or repairs under the guarantee.

24H

24 Hour express service

Express orders have a turn-around time of 24 hours after artwork approval and payment. An express levy surcharge of 25% of the order value is charged. All express order are subject to available production capacity. Express orders exclude POS products, Gazebos and Umbrellas.

ON ICONS

DD

DIGITAL PRINT



PRODUCT LIFETIME
GUARANTEE

SP

SCREEN PRINT

24H

24 HOUR EXPRESS
SERVICE



SCAN QR CODE FOR
ASSEMBLY INSTRUCTIONS



ON

INDEX

04 FLAGS

Country Flags	05
Corporate Flags	06
4-Pole Cluster Flags	07
5-Pole Cluster Flags	07
Country Desk Flags	08
Corporate Desk Flags	08
Indoor Flag Poles	09
Outdoor Flag Poles	09



10 PROMOTIONAL INDOOR BANNERS

Tension Banner Wall	11
Banner Walls - Curved	12
Banner Walls - Curved with Wings	13
Banner Walls - Single Sided	14
Banner Walls - Double Sided	14
Indoor Light Box	15
Fabric Frames - Wall Mounted	16
Fabric Frames - Free Standing	17
Luxury Chrome Base	18
Desk Mini Pull-Up Banner	18



Pull-Up Banners	19
X-Frames with Hooks	20
EZ Display Banner Stand	21
Hanging Banner	22
Table Cloths	23

24 GAZEBOS & OUTDOOR

Gazebos	25
Gazebos - Half and Full Walls	25
Harp Banners	26
Wind Cheater Banners	27
Telescopic Banners	28
A-Frame Banners	29
Horse Shoe Banners	30
Pop-Up Banner	31
Umbrellas	32
Folding Directors Chair	33



Fence Wrap	34
Windssocks & Base	35
Pennants - Printed & Plain	35

36 INFLATABLES

Air Tent	37
Air Column	38
Air Chair	39
Air Ottoman	39



40 POINT OF SALE

Poster - Flute Board Collection	41
Hanging Decals - Flute Board Collection	42
Stack Corners - Flute Board Collection	42
Cubes - Flute Board Collection	42
5 Stand	43
Cocktail Standee	43
Custom Standee	43
Promo Table	44
Kiosk	45
Canvas Prints	46
PVC Banners	47



Correx Signs	48
ABS Plastic	49
Perspex	49
Forrex Signs	50
Contravision	50
Vinyl - Windows	51
Vinyl - Floors	51

52 HARDWARE & ACCESSORIES

Banner Wall Frame	52
Curved Banner Wall Frame	52
A-Frame Banner Frame	53
Umbrella Frame	53
Gazebo Frame	53
Telescopic Banner Frame	53
Wind Cheater Banner Frame	53
Harp Banner Frame	53
Scissor Banner Base	53
Cluster Flag Hardware	53
Indoor Banner Base	53
Water Bag for Banner Base	54
Ground Spike	54
Bearing Spike	54
Cement Umbrella Base	54
Rubber Umbrella Base	54



Banner Wall Wing	54
Gazebo Toolkit	54
Gazebo Bag	54
Deluxe Gazebo Bag	54
Deluxe Banner Wall Bag	55
LED Lights	55
Electric Pump	55
Hand Pump	55
Pull-Up Banner Econo Base	55
Pull-Up Banner Chrome Base	55
Pull-Up Banner Black Chrome Base	55

56 GLOSSARY





ON FLAGS

Build ON the pride of your country by flying your flag high. BARRON serves to help build country pride with superior quality flags available for all countries of the world.

COUNTRY FLAGS

Features: Screen printed (max 6 colours) onto Bunting or digitally printed onto Ultrasheen • Flags for all countries available (See website for stock availability) • 2 day waiting period on non-stock items • Rope and toggle included • Pole not included

Branding:

SP **24H**

SIZE INDICATIONS (L x H)					
	Storm	Universal	Standard	Ceremonial	Grand Ceremonial
Assembled	90 x 60cm	135 x 90cm	180 x 120cm	270 x 180cm	540 x 360cm
Packaged	40 x 30 x 10cm				
Weight	0.4kg	0.35kg	0.6kg	1kg	3kg



Rope and toggle detail



1.8 x 1.2m

HOW TO ORDER:	
1	Select flag size:
	• See size indications





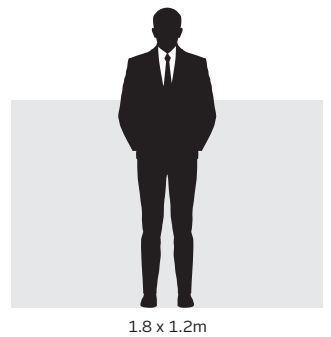
CORPORATE FLAGS-SINGLE SIDED

Features: Digitally or screen printed on Ultrashreen • Screen printing: Storm, Universal & Standard - Max 6 Colours
 • Standard, Ceremonial, Corporate and Custom - Max 4 colours • Pole not included • Rope and toggle included
 • Sleeve, chain and clips are optional extras

Branding:

SP **DD** **24H**

SIZE INDICATIONS (L X H)						
	Storm	Universal	Standard	Ceremonial	Corporate	Custom
Assembled	90 x 60cm	135 x 90cm	180 x 120cm	270 x 180cm	120 x 300cm	Variable
Packaged	40 x 30 x 10cm					Variable
Weight	0.2kg	0.3kg	0.6kg	1kg	3kg	Variable



1.8 x 1.2m

HOW TO ORDER:		
<p>1 Select flag size:</p> <ul style="list-style-type: none"> • See size indications 	<p>2 Select print type:</p> <ul style="list-style-type: none"> • Digital print • Screen print (max 4 - 6 colours) 	<p>3 Optional extras:</p> <ul style="list-style-type: none"> • Sleeve • Chain • Clips



4-POLE CLUSTER FLAGS

Features: Digitally printed or screen printed (max 4 colours) on Ultrashreen
 • 6m Cluster poles • 1 x 3m cluster flags • 4 Aluminium poles
 • Included: carry bag for poles, carry bag for flags



Branding:

SP DD 24H

SIZE INDICATIONS (L X H)		
POLES		
	4-Pole	5-Pole
Packaged	150 x 30 x 30cm	
Weight	22kg	25kg
FLAGS		
Assembled	1m x 3m	
Packaged	40 x 30 x 10cm	
Weight	1kg	



1 x 3m

HOW TO ORDER:	
1 Select base: • 4 Pole • 5 Pole	2 Select print type: • Digital print • Screen print (max 4 colours)



5-POLE CLUSTER FLAGS

Features: Digitally printed or screen printed (max 4 colours) on Ultrashreen
 • 6m Cluster poles • 1 x 3m cluster flags • 5 Aluminium poles
 • Included: carry bag for poles, carry bag for flags



Branding:

SP DD 24H



Pole carry bag included



Base carry bag included



Cluster base





COUNTRY DESK FLAGS

Features: Digitally printed onto Pongee • Minimum order quantity of 10 • Standard plastic base and finnel pole • Wooden base and pole are optional extras

Branding:

DD

SIZE INDICATIONS (L X H)		
Assembled	15 x 10cm	22 x 15cm
Packaged	40 x 30 x 10cm	
Weight	15g	20g

HOW TO ORDER:		
1 Select size: • See size indications	2 Select stick: • Plastic • Wooden	3 Select base: • See optional bases

BASE OPTIONS



Supplied with plastic round single hole

Wooden round 3 hole

Wooden cross base 2 holes

Finnel detail on plastic pole



CORPORATE DESK FLAGS

Features: Digitally printed onto Pongee or Ultrasheen • Minimum order quantity of 10 • Standard plastic base and finnel pole • Wooden base and pole are optional extras

Branding:

DD

SIZE INDICATIONS (L X H)		
Assembled	15 x 10cm	22 x 15cm
Packaged	40 x 30 x 10cm	
Weight	15g	20g

HOW TO ORDER:			
1 Select size: • See size indications	2 Select material: • Ultrasheen • Pongee	3 Select stick: • Plastic • Wooden	4 Select base: • See optional bases



INDOOR FLAG POLES

Features: Brass coated steel poles
 • Indoor use only • 2.5m high only
 • Different base options available (see below)

BASE OPTIONS



Brass base - 1 pole



Brass base - 2 pole



Brass base - 3 pole

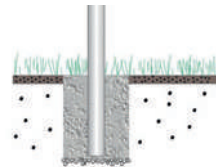
HOW TO ORDER:	
1 Select bracket for base option: <ul style="list-style-type: none"> Indoor brass base - 1 pole Indoor brass base - 2 pole Indoor brass base - 3 pole 	2 Select pole size: <ul style="list-style-type: none"> 2.5m



OUTDOOR FLAG POLES

Features: Aluminium poles • Outdoor use only • Collections only, JHB, CPT and Durban • Various sizes available (see table below) • Different base options available (see table below)

BASE OPTIONS



Ground mounted



Swivel



Wall mounted

HOW TO ORDER:	
1 Select bracket for base option: <ul style="list-style-type: none"> Outdoor ground mounted Outdoor swivel Outdoor wall mounted 	1 Select size: <ul style="list-style-type: none"> 2.5m, 3m, 5m, 6m, 7.5m, 9m, 12m, 15m

BRACKET OR BASE OPTIONS	OUTDOOR FLAG POLE HEIGHT							
	2.5m	3m	5m	6m	7.5m	9m	12m	15m
Outdoor ground mounted (Aluminium)				x	x	x		
Outdoor swivel (Aluminium)				x	x	x	x	x
Outdoor wall mounted (Aluminium)	x	x	x	x				
Indoor brass base - 1 pole	x							
Indoor brass base - 2 pole	x							
Indoor brass base - 3 pole	x							

Blue Earth
TECHNOLOGIES



ON

PROMOTIONAL INDOOR BANNERS

Stand out with BARRON's promotional indoor banners that bring life to interior spaces. Whether you are promoting a logo, brand or company, BARRON banners will get you ON top of mind.

TENSION BANNER WALL

Features: Digitally printed onto Bannerweave • Single sided only • Chonk fabric stretched system • Lightweight
 • Portable • Easy to assemble • Custom sizes available (see table below) • Side wings - option not available
 • Carry bag included: size 40 x 35 x 86cm • Deluxe carry bag optional extra

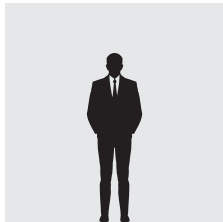


Branding:

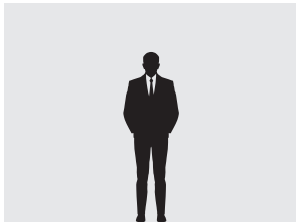
DD 24H

NEW

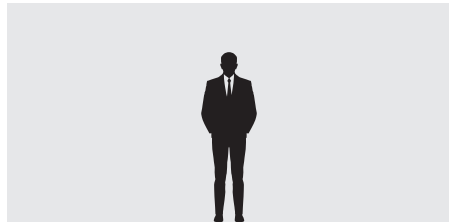
SIZE INDICATIONS (L X H)				
Assembled	2.25 x 2.25m	3 x 2.25m	4.5 x 2.25m	Custom
Packaged	100 x 40 x 40cm	100 x 40 x 40cm	100 x 50 x 40m	Max height 2.25m
Weight	11.2kg	14kg	17kg	Variable



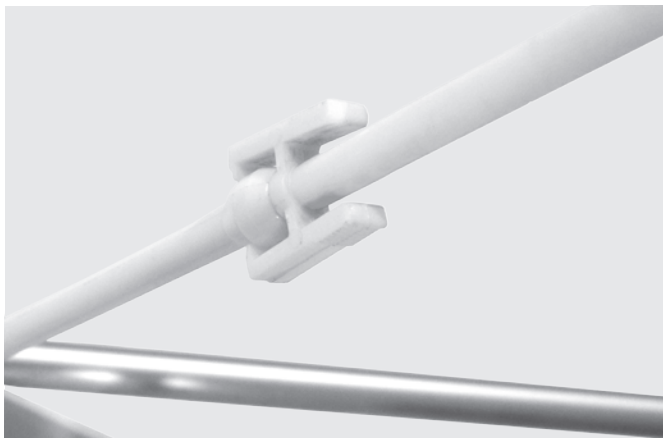
2.25 x 2.25m



3 x 2.25m



4.5 x 2.25m



Tension banner wall detail



Chonk system detail



Deluxe carry bag optional extra



Carry bag included

HOW TO ORDER:		
1 Select print options • Single sided	2 Select frame size • See size indications	4 Select bag type • Standard bag • Deluxe bag

Earth
NOLOGIES





BANNER WALLS - CURVED

Features: Digitally printed onto Bannerweave • Single sided • Lightweight • Portable • Easy to assemble
 • Carry bag included • Deluxe carry bag optional extra

Branding:

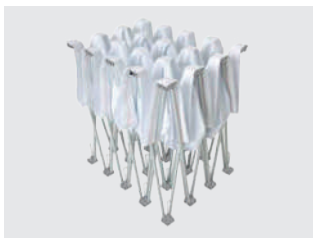
DD 24H



Deluxe carry bag optional extra



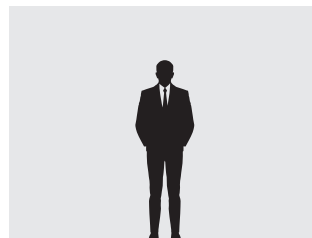
Standard carry bag included



Banner wall frame



Curved banner wall plastic clip



Curved - 3 x 2.25m

SIZE INDICATIONS (L X H)			
Assembled	2.25 x 2.25m	3 x 2.25m	4.5 x 2.25m
Packaged	100 x 40 x 40cm	100 x 40 x 40cm	100 x 50 x 40m
Weight	10.2kg	12.96kg	15.76kg

HOW TO ORDER:

- Select frame size:**
 - See size indication



BANNER WALLS - CURVED WITH WINGS

Features: Digitally printed onto Bannerweave • Single sided • Lightweight • Portable • Easy to assemble
 • Carry bag included • Side wings included • Deluxe carry bag optional extra

Branding:

DD 24H



Back view



Banner wall frame



Curved banner wall plastic clip

SIZE INDICATIONS (L X H)			
Assembled	3.25 x 2.25m	4.5 x 2.25m	5.5 x 2.25m
Packaged	100 x 40 x 40cm	100 x 40 x 40cm	100 x 50 x 40m
Weight	11.2kg	13.96kg	16.76kg

HOW TO ORDER:

- 1 Select frame size:
 - See size indication



Deluxe carry bag optional extra



Standard carry bag included



Curved with wings - 4.5 x 2.25m



BANNER WALLS - SINGLE SIDED

Features: Digitally printed onto Bannerweave • Single sided • Lightweight
 • Portable • Easy to assemble • Custom sizes available (see table below)
 • Side wings - optional extra • Carry bag included
 • Deluxe carry bag optional extra

Branding:



SIZE INDICATIONS (L X H)				
Assembled	2.25 x 2.25m	3 x 2.25m	4.5 x 2.25m	Custom
Packaged	100 x 40 x 40cm	100 x 40 x 40cm	100 x 50 x 40m	Max height 2.25m
Weight	10.2kg	12.96kg	15.76kg	Variable

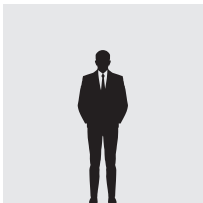
BANNER WALLS - DOUBLE SIDED

Features: Digitally printed onto Bannerweave • Double sided • Lightweight
 • Portable • Easy to assemble • Custom sizes available (see table below)
 • Side wings - optional extra • Carry bag included
 • Deluxe carry bag optional extra

Branding:



SIZE INDICATIONS (L X H)				
Assembled	2.25 x 2.25m	3 x 2.25m	4.5 x 2.25m	Custom
Packaged	100 x 40 x 40cm	100 x 40 x 40cm	100 x 50 x 40m	Max height 2.25m
Weight	12.2kg	14.96kg	17.76kg	Variable



2.25 x 2.25m



Carry bag included



Deluxe carry bag optional extra



Back view



Banner wall frame



Additional option with wings

HOW TO ORDER:

1 Select print options • Single sided • Double sided	2 Select frame size • See size indications	3 Add wings • Yes / No	4 Select bag type • Standard bag • Deluxe bag
---	--	----------------------------------	--



INDOOR LIGHT BOX

- Features:** Digitally printed onto Polyester canvas • Single sided
 • Lightweight Aluminium frame • Shipped assembled
 • Installation not included • LED lights included
 • Custom sizes available (see table below)



Branding:

DD

NEW

SIZE INDICATIONS (L X H)				
Assembled	0.5 x 1m	1 x 2m	1.5 x 2m	Custom
Packaged	0.5 x 1m	1 x 2m	1.5 x 2m	Variable
Weight	5.5kg	11kg	12.1kg	Variable

HOW TO ORDER:

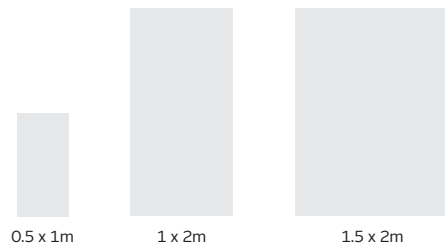
- 1 Select size:**
 • See size indications



Front view



Back view



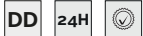


FABRIC FRAMES - WALL MOUNTED

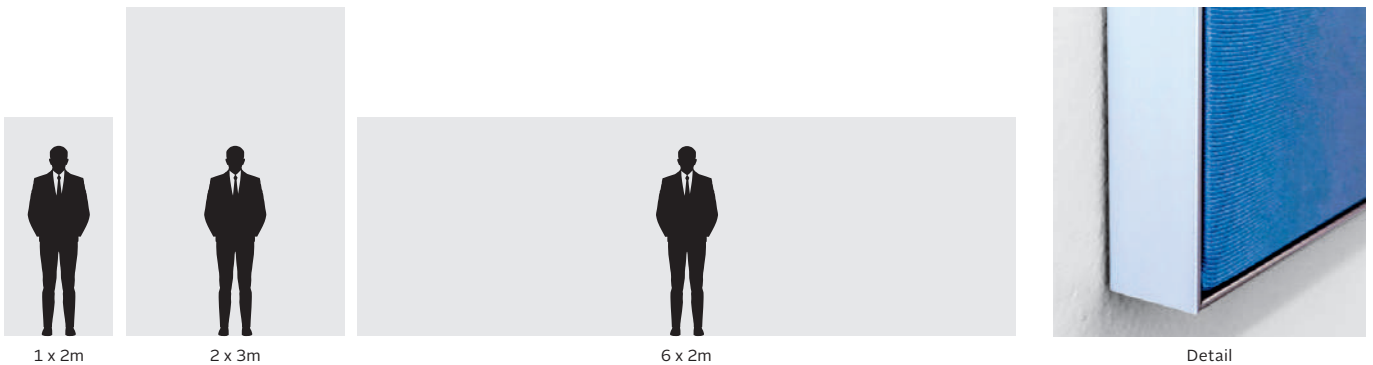
Features: Digitally printed onto Bannerweave • Single sided • Lightweight Aluminium frame • Standard corner set • Shipped unassembled
 • Installation not included • Can be tiled to make giant display • Custom sizes available (see table below)



Branding:



SIZE INDICATIONS (L X H)				
Assembled	1 x 2m	2 x 3m	6 x 2m	Custom
Packaged	200 x 10 x 10cm	300 x 10 x 10cm	300 x 30 x 30cm	Variable
Weight (SS)	8kg	14kg	25kg	Variable



HOW TO ORDER:
1 Select frame size: • See size indication



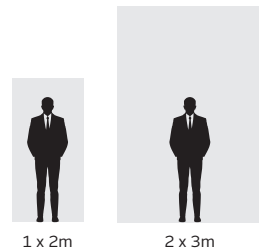
FABRIC FRAMES - FREE STANDING

Features: Digitally printed onto Bannerweave • Single or double sided • Lightweight Aluminium frame • Standard corner set • Includes frame stand • Shipped unassembled • Installation not included • Can be tiled to make giant display • Custom sizes available (see table below)

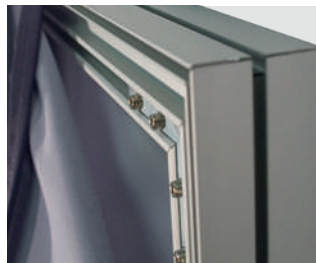
Branding:



SIZE INDICATIONS (L X H)				
Assembled	1 x 2m	2 x 3m	6 x 2m	Custom
Packaged	200 x 20 x 10cm	300 x 20 x 10cm	300 x 30 x 30cm	Variable
Weight (SS)	12kg	16.5kg	24kg	Variable
Weight (DS)	12kg	16.5kg	24kg	Variable



Free standing frame



Double sided frame



Single sided frame



Detail

HOW TO ORDER:	
<p>1 Select frame size:</p> <ul style="list-style-type: none"> • See size indications 	<p>2 Select print options:</p> <ul style="list-style-type: none"> • Single sided • Double sided



LUXURY CHROME BASE

Features: Digitally printed onto PVC or Bannerweave • Single sided
 • 2m high when open • Retracts back into base • Lightweight
 • Portable • Easy to assemble • Carry bag included
 • Black or silver base option available

NEW

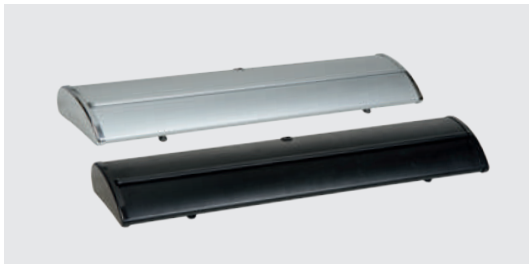
Branding:

DD **24H**

SIZE INDICATIONS (L X H)	
Assembled	0.85 x 2m
Packaged	91 x 12cm
Weight	4.5kg



0.85 x 2m



Black and silver luxury base

HOW TO ORDER:	
1 Select material <ul style="list-style-type: none"> • Ferrari • PVC • Bannerweave 	2 Colour base <ul style="list-style-type: none"> • Silver • Black



DESK MINI PULL-UP BANNER

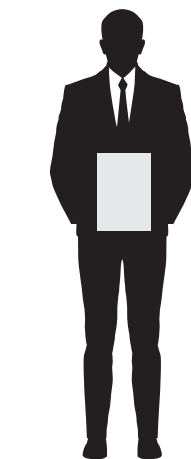
Features: Digitally printed onto PVC • Single sided • Retracts
 back into base • A4 size • Portable • Easy to assemble
 • Supplied in a box

NEW

Branding:

DD **24H**

SIZE INDICATIONS (L X H)	
Assembled	31.5 x 21cm
Packaged	24 x 8cm
Weight	0.23kg



31.5 x 21cm



Single sided back view



Detail



Banner retracts into base

PULL-UP BANNERS

Features: Digitally printed onto PVC or Bannerweave • Single sided or double sided • 2m high when open • Retracts back into base • Lightweight • Portable
 • Easy to assemble • Carry bag included • Econo (PVC print only) • Deluxe (PVC or Bannerweave) • Double sided (PVC or Bannerweave)



Branding:

DD 24H



Single sided banner



Double sided banner

PULL-UP BANNER - SINGLE SIDED: SIZE INDICATIONS (L X H)		
Assembled	0.85 x 2m	0.85 x 2m
Base	Econo	Deluxe
Packaged	85 x 10 x 10cm	85 x 10 x 10cm
Weight	4kg	5kg

PULL-UP BANNER - DOUBLE SIDED: SIZE INDICATIONS (L X H)	
Assembled	0.85 x 2m
Base	Double sided base
Packaged	85 x 30 x 10cm
Weight	8kg



Single sided back view



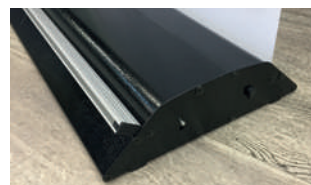
Single sided econo base option



Single sided deluxe base option



Carry bag included



Double sided base detail



0.85 x 2m

HOW TO ORDER: SINGLE SIDED	
1 Select base:	2 Select material:
<ul style="list-style-type: none"> Econo Deluxe 	<ul style="list-style-type: none"> PVC Bannerweave

HOW TO ORDER: DOUBLE SIDED
1 Select material:
<ul style="list-style-type: none"> PVC Bannerweave



X-FRAME BANNERS WITH HOOKS

Features: Digitally printed onto PVC • Single sided • Banner folds neatly into a carry bag • Made from steel and fibreglass • Lightweight • Portable • Easy to assemble • Carry bag included

NEW

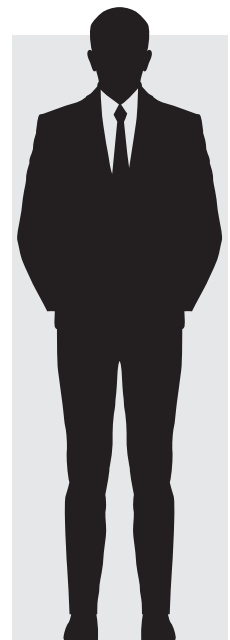
Branding:

DD 24H

SIZE INDICATIONS (L X H)		
Assembled	60 x 160cm	80 x 180cm
Packaged	14 x 108cm	14 x 118
Weight	2kg	2.25kg



Back view



0.60 x 1.6m



Hook back view detail



Hook front view detail



Carry bag included



EZ DISPLAY BANNER STAND

Features: Digitally printed onto Bannerweave • Double sided • Banner slides over frame • Interchangeable skins • Lightweight • Portable • Easy to assemble • Carry bag included

NEW

Branding:

DD 24H

SIZE INDICATIONS (L X H)	
Assembled	0.85 x 2.28m
Packaged	92 x 13 x 12cm
Weight	2.9kg



EZ banner frame detail



Carry bag included



0.85 x 2.28m



EZ banner frame



Hanging banner folded



Clip detail



Hanging banner carry bag



Eyelet detail

HANGING BANNER

Features: Digitally printed onto Bannerweave • Single sided • Lightweight
 • Portable • Easy to assemble • Carry bag included
 • Rope and eyelets included

NEW

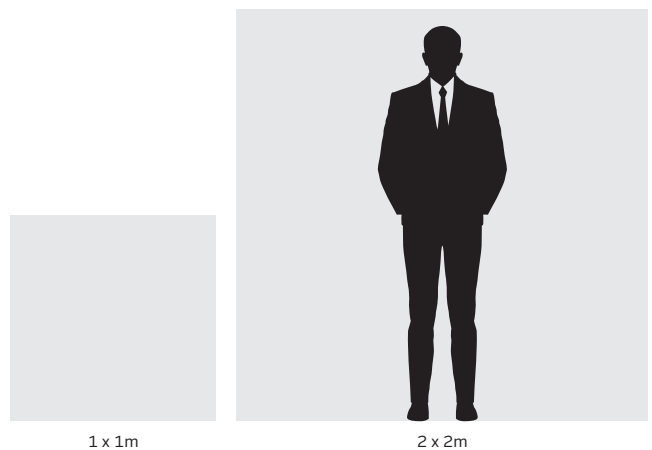
Branding:

DD

SIZE INDICATIONS (L X H)		
Assembled	1 x 1m	2 x 2m
Packaged	88 x 2cm	91 x 2cm
Weight	1.8kg	2.2kg

HOW TO ORDER:

- Select size:**
 - See size indications



1 x 1m

2 x 2m



TABLE CLOTHS

Features: Digitally printed or Screen printed (max 4 colours) onto Bannerweave or PVC

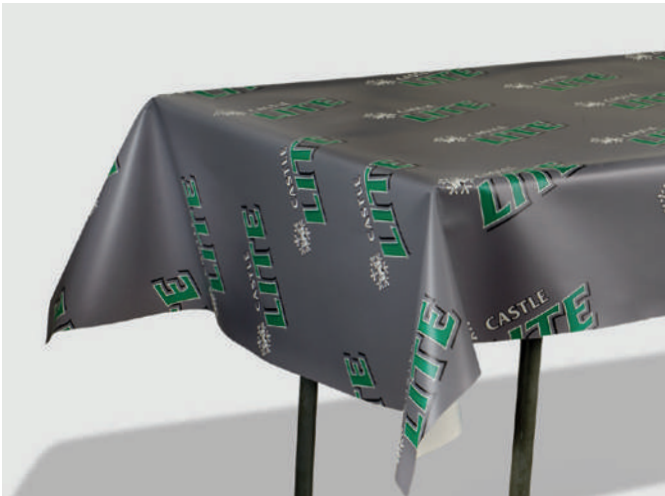
• Max width of PVC is 1.25m • Single sided • Durable • Lightweight • Portable

Branding:

DD SP 24H

SIZE INDICATIONS (L X H)				CUSTOM
Assembled	2 x 1m	2.5 x 1.5m	3.5 x 1.5m	Variable
Packaged	40 x 30 x 10cm			Variable
Weight	1kg	1.5kg	2kg	Variable

HOW TO ORDER:		
1 Select size: • See size indication	2 Select print type: • Digital print • Screen print (max 4 colours)	3 Select material: • Bannerweave • PVC



PVC table cloth



ON

GAZEBOS & OUTDOOR

Get ON out there! Create a lasting impression with BARRON's gazebos and outdoor banner range. High quality and weather resistant to stand the test of time. Suitable for all types of events including exhibitions, trade shows, golf days and corporate events.

GAZEBOS

Features: Digitally printed or Screen printed (max 4 colours) onto water resistant canvas • Single sided • Folds neatly into a carry bag
 • Lightweight • Portable • Easy to assemble • Carry bag included
 • Outer walls available as an optional extra
 • Deluxe carry bag optional extra



Branding:



SIZE INDICATIONS (L X H)			
Assembled	2 x 2m	3 x 3m	3 x 4.5m
	Steel only	Steel & aluminium	Steel only
Packaged	150 x 30 x 30cm		150 x 30 x 40cm
Weight	15kg	30kg / 20kg	35kg

HOW TO ORDER:		
1 Select frame size: • See size indications	2 Select frame material: • Steel • Aluminium	3 Select print type: • Digital print • Screen print (max 4 colours)

GAZEBOS - HALF AND FULL WALLS

Features: Digitally or Screen printed onto water resistant canvas
 • Full or spot colour • Finished with velcro edging for easy fixing to the frame

Branding:



SIZE INDICATIONS (L X H)						
Assembled	2 x 2m		3 x 3m		3 x 4.5m	
Full Wall	2 x 1.9m		3 x 1.9m		4.5 x 1.9m	
Half Wall	2 x 0.85m		3 x 0.85m		4.5 x 0.85m	
Packaged	40cm x 30cm x 10cm					
	Full Wall	Half Wall	Full Wall	Half Wall	Full Wall	Half Wall
Weight	0.8kg	0.5kg	1kg	0.8kg	2kg	1kg

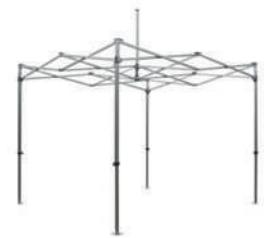
HOW TO ORDER:		
1 Select frame size: • See size indications	2 Select wall size: • Full • Half	3 Select print type: • Digital print • Screen print (max 4 colours)



Gazebo toolkit



Carry bag included



Easy set up frame



Standard Gazebo



Easy storage and transport



Connector



Gazebo foot detail



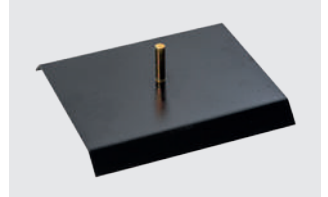
Deluxe Gazebo bag optional extra



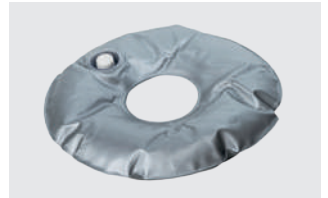
BASE OPTIONS NOT INCLUDED



Scissor base



Indoor base



Water bag (optional extra) with scissor base



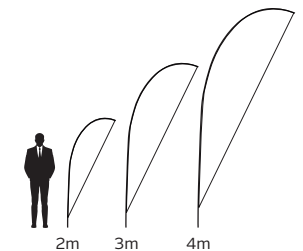
Ground spike



Bearing spike



Carry bag included



HARP BANNERS

Features: • Digitally printed or Screen printed (max 4 colours) onto Ultrasheen • Double or single sided
 • Folds neatly into a carry bag • Lightweight • Portable • Easy to assemble • Carry bag included
 • Ground spike not included • Various optional extra bases available • Fibreglass or aluminium rods



Branding:



SIZE INDICATIONS (L X H)			
Material	Aluminium / Fibreglass	Aluminium / Fibreglass	Fibreglass
Assembled	2m	3m	4m
Packaged	170 x 10 x 10cm		
Weight (Aluminium SS)	1.6kg	1.7kg	NA
Weight (Aluminium DS)	2kg	2.2kg	NA
Weight (Fibreglass SS)	1.5kg	1.6kg	1.8kg
Weight (Fibreglass DS)	2.1kg	2.6kg	3.2kg

HOW TO ORDER:				
1 Select frame material: <ul style="list-style-type: none"> Fibreglass Aluminium 	2 Select frame size: <ul style="list-style-type: none"> See size indications 	3 Select print options: <ul style="list-style-type: none"> Single sided Double sided 	4 Select print type: <ul style="list-style-type: none"> Digital print Screen print (max 4 colours) 	5 Select base options: <ul style="list-style-type: none"> Ground spike Bearing spike Indoor base Scissor base Water bag (optional extra) with scissor base



WIND CHEATER BANNERS

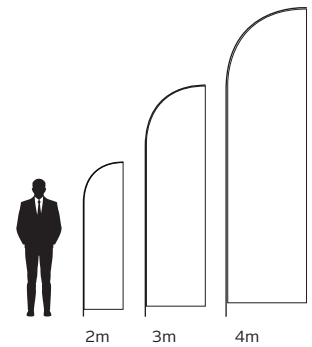
Features: Digitally printed or Screen printed (max 4 colours) onto Ultrasheen • Double or single sided
 • Folds neatly into a carry bag • Lightweight • Portable • Easy to assemble • Carry bag included
 Ground spike not included • Various optional extra bases available • Fibreglass or aluminium rods



Branding:



SIZE INDICATIONS (L X H)			
Material	Aluminium Fibreglass	Aluminium Fibreglass	Fibreglass
Assembled	2m	3m	4m
Packaged	170 x 10 x 10cm		
Weight (Aluminium SS)	1.6kg	1.7kg	NA
Weight (Aluminium DS)	2kg	2.2kg	NA
Weight (Fibreglass SS)	1.5kg	1.6kg	1.8kg
Weight (Fibreglass DS)	2.1kg	2.6kg	3.2kg



Carry bag included

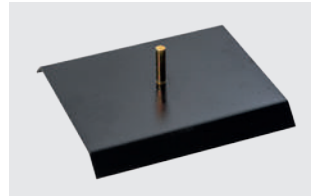
BASE OPTIONS NOT INCLUDED



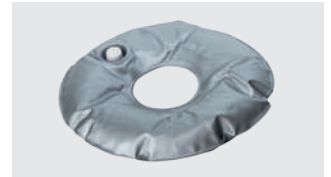
Ground spike



Scissor base



Indoor base



Water bag (optional extra) with scissor base

HOW TO ORDER:

1 Select frame material: <ul style="list-style-type: none"> Fibreglass Aluminium 	2 Select frame size: <ul style="list-style-type: none"> See size indications 	3 Select print options: <ul style="list-style-type: none"> Single sided Double sided 	4 Select print type: <ul style="list-style-type: none"> Digital print Screen print (max 4 colours) 	5 Select base options: <ul style="list-style-type: none"> Ground spike Bearing spike Indoor base Scissor base Water bag (optional extra)
---	--	---	---	--



Bearing spike

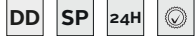


TELESCOPIC BANNERS

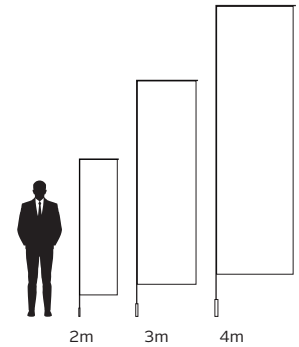
Features: Digitally printed or Screen printed (max 4 colours) onto Ultrasheen • 24hr turnaround only available with digital printing • Double or single sided • Folds neatly into a carry bag • Lightweight • Portable • Easy to assemble • Carry bag included • Ground spike not included • Various optional extra bases available • Fibreglass or aluminium rods



Branding:



SIZE INDICATIONS (L X H)			
Material	Aluminium Fibreglass	Aluminium Fibreglass	Fibreglass
Assembled	2m	3m	4m
Packaged	170 x 10 x 10cm		
Weight (Aluminium SS)	1.8kg	2.7kg	NA
Weight (Aluminium DS)	2.1kg	2.4kg	NA
Weight (Fibreglass SS)	1.7kg	2.6kg	3.5kg
Weight (Fibreglass DS)	2.7kg	3.2kg	4kg



Carry bag included

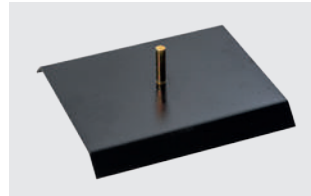
BASE OPTIONS NOT INCLUDED



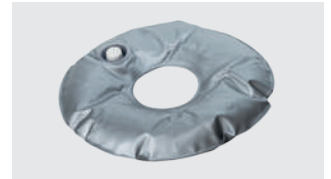
Ground spike



Scissor base



Indoor base



Water bag (optional extra) with scissor base

HOW TO ORDER:				
1 Select frame material: <ul style="list-style-type: none"> Fibreglass Aluminium 	2 Select frame size: <ul style="list-style-type: none"> See size indications 	3 Select print options: <ul style="list-style-type: none"> Single sided Double sided 	4 Select print type: <ul style="list-style-type: none"> Digital print Screen print (max 4 colours) 	5 Select base options: <ul style="list-style-type: none"> Ground spike Bearing spike Indoor base Scissor base Water bag (optional extra)



Bearing spike



A-FRAME BANNERS

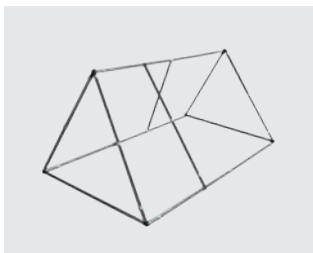
Features: • Digitally printed or Screen printed (max 4 colours) onto Bannerweave • With or without sides • Folds neatly into a carry bag • Lightweight aluminium frame • Portable • Easy to assemble • Carry bag included
 • 2 x 1m (one centre crossbar) • 3 x 1m (two centre crossbar)



Branding:



Carry bag included



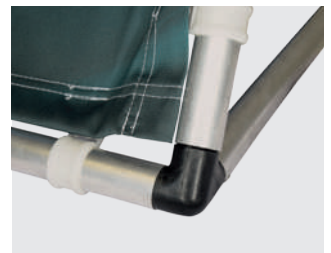
A-Frame hardware



A-Frame with no side panel



A-Frame with side panel



Connector

SIZE INDICATIONS (L x H)		
Assembled	2 x 1m	3 x 1m
Packaged	120 x 15 x 15cm	150 x 15 x 15cm
Weight	3.1kg	4.6kg

HOW TO ORDER:		
1 Select frame size: • See size indications	2 Select print type: • Digital print • Screen print (max 4 colours)	3 Side panel: • Yes / No



2 x 1m



HORSE SHOE BANNER

Features: Digitally printed or Screen printed (max 4 colours) onto Ultrasheen • Double sided • Folds neatly into a carry bag • Lightweight • Portable • Easy to assemble • Carry bag included

Branding:

DD SP 24H

SIZE INDICATIONS (L X H)	
Assembled	0.9 X 0.9m
Packaged	1 x 1 x 1m
Weight	2kg



0.9 x 0.9m



Carry bag included



POP-UP BANNER

Features: Digitally printed or Screen printed (max 4 colours) onto Bannerweave • Double sided • Folds neatly into a carry bag
 • Lightweight • Portable • Easy to assemble
 • Carry bag included



Branding:

DD SP 24H

SIZE INDICATIONS (L X H)	
Assembled	2 x 90cm
Packaged	90 x 90 x 5cm
Weight	3.1kg



2 x 90cm



Carry bag included



UMBRELLA

Features: Digitally printed or Screen printed (max 4 colours) onto water resistant canvas • Single sided • Folds neatly into a carry bag • Lightweight steel frame
 • Portable • Easy to assemble • Carry bag included • Various optional extra bases available

Branding:



SIZE INDICATIONS (L x H)	
Assembled	2 x 2m
Packaged	200 x 15 x 15cm
Weight	8kg

BASE OPTIONS (OPTIONAL EXTRA)



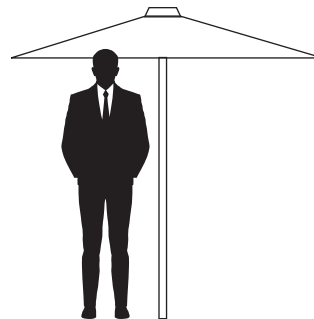
Concrete umbrella base



Flat rubber umbrella base



Carry bag included



2 x 2m



Folded umbrella detail

HOW TO ORDER:	
1 Select print type: <ul style="list-style-type: none"> • Digital print • Screen print (max 4 colours) 	2 Select base options: <ul style="list-style-type: none"> • None • Concrete • Rubber



FOLDING DIRECTORS CHAIR

Features: Digitally printed or Screen printed (max 6 colours) onto Polyester
 • Single sided • Lightweight Aluminium frame • Portable
 • Padding in armrests • Max weight 120kg • Back rest
 and seat printing only • Armrest printing as an optional extra

NEW

Branding:

DD **SP**

SIZE INDICATIONS (L X H)

Assembled	77 x 55 x 45cm
Packaged	82 x 50 x 9cm
Unit weight	1.85kg

HOW TO ORDER:

<p>1 Select print type:</p> <ul style="list-style-type: none"> • Digital print • Screen print (max 6 colours) 	<p>1 Armrest printing option:</p> <ul style="list-style-type: none"> • Yes / No
--	---



Folded chair detail



FENCE WRAP

Features: • Digitally printed or Screen printed onto Ribtex • Single sided • Supplied in panels • Finished with eyelets

Branding:

DD **SP** **24H**

SIZE INDICATIONS (L X H)		CUSTOM
2 x 1m	2 x 1.2m	Variable

HOW TO ORDER:	
1 Select print type: <ul style="list-style-type: none"> • Digital print • Screen print (max 6 colours) 	2 Select Height: <ul style="list-style-type: none"> • 1m • 1.2m
3 Select quantity: <ul style="list-style-type: none"> • 1 panel = 2m 	4 Select finishing: <ul style="list-style-type: none"> • Eyelets • None



2 x 1m



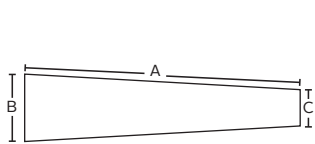
Perforated fabric detail

WINDSOCKS AND BASE

Features: Digitally printed or Screen printed (max 4 colours) onto Bunting • Steel ring and eyelets • Pole not included

Branding:

DD **SP** **24H**



Windsock size



Windsock detail

SIZE INDICATIONS (L X H)			
Assembled	180 x 38 x 20cm	270 x 60 x 40cm	360 x 90 x 60cm
Packaged	38 x 38 x 5cm	80 x 60 x 5cm	90 x 90 x 5cm
Weight	1kg	2kg	3kg

HOW TO ORDER:	
1 Select frame size: • See size indications	2 Select print type: • Digital print • Screen print (max 4 colours)



PENNANTS - PRINTED AND PLAIN

Features: Digitally printed onto PVC • Single or double sided • Rectangle or triangle options • White string only • Minimum of 50m per print • 3.6 Pennants per meter • Plain pennants are available in a range of 16 colours (see colours below)

Branding:

DD **24H**

PENNANTS - PRINTED AND PLAIN: SIZE INDICATIONS (L X H)
20 x 30cm



Silver	White	Red Pantone 7626C	Orange Pantone 021C
Reflex Blue	Black	Blue Pantone 2145C	Sky Pantone 630C

Brown Pantone 7533C	Dark Red Pantone 7621C	Turquoise Pantone 7466C	Bottle Pantone 626CP
Navy Pantone 282C	Yellow Pantone 108C	Maroon Pantone 209CP	Emerald Pantone 355CP

HOW TO ORDER: PRINTED PENNANTS			
1 Select print options: • Single sided • Double sided	2 Select shape: • Rectangle • Triangle	3 Select length: • Minimum 50m per print	4 Select sew-on: • Single • Multiple

HOW TO ORDER: PLAIN PENNANTS		
1 Select colours: • See available colours	3 Select length: • 50m	3 Select sew-on: • Single • Multiple

ON

INFLATABLES

Whether you are you are planning a picnic, golf day or an exhibition our range of inflatable equipment is the reason why your event would stand out from the rest. Our inflatable tent, column and chair can be pitched in a few minutes giving you enough time to Switch Your Brand ON.





AIR TENT

Features: Digitally printed onto Polyester • Single sided • Folds neatly into a carry bag • Lightweight
 • Portable • Fire retardant TPU bladder • Lifespan of the TPU bladder: 1 year continuous use
 • Stays inflated for up to 3 days • Included: Repair kit, 20 PVC ground spikes and carry bag
 • Optional extras: Electric pump, ground sheet and side doors



Branding:

DD

NEW

SIZE INDICATIONS (L x H)	
Assembled	3 x 3m
Packaged	44 x 30 x 23
Weight	10kg
Packaged (Skin)	50 x 38 x 18
Weight (Skin)	8kg



Ground sheet optional extra



Carry bag included



20 PVC ground spikes included



Repair kit included

HOW TO ORDER:	
1 Extra options: <ul style="list-style-type: none"> • Electric pump • Ground sheet 	1 Extra side door options: <ul style="list-style-type: none"> • 1 - 4



AIR COLUMN

Features: Digitally printed onto Polyester • Single sided • Folds neatly into a carry bag • Lightweight • Portable • Translucent PVC bladder • Lifespan of the Air column bladder: 6 months continuous use • Stays inflated for up to 3 days • Included: Repair kit, 15L water base and carry bag • Optional extras: Electric pump, hand pump and LED lights



Branding:

DD

NEW

SIZE INDICATIONS (L X H)		
Assembled	45 x 120cm	45 x 220cm
Packaged	45 x 45 x 20cm	45 x 45 x 25cm
Weight	5kg	7kg

HOW TO ORDER:	
1 Select size: <ul style="list-style-type: none"> • See size indications 	2 Extra options: <ul style="list-style-type: none"> • Electric pump • Hand pump • LED lights



Carry bag included



1.2m

2.2m



Repair kit included



AIR CHAIR

Features: Digitally printed onto Polyester • Single sided • Folds neatly into a carry bag • Lightweight • Portable • Max weight 100kg • Translucent PVC bladder • Lifespan of the Air chair bladder: 6 months continuous use • Stays inflated for up to 3 days • Optional extras: Electric pump and hand pump • Included: Repair kit and carry bag



Branding:

DD 24H

NEW

SIZE INDICATIONS (L X H)	
Assembled	0.75 x 0.88 x 75cm
Packaged	39 x 18 x 31cm
Weight	2.5kg



75cm



Carry bag included

HOW TO ORDER:

- 1 Extra options:**
- Electric pump
 - Hand pump



AIR OTTOMAN

Features: Digitally printed onto Polyester • Single sided • Folds neatly into a carry bag • Lightweight • Portable • Max weight 90kg • Translucent PVC bladder • Lifespan of the Air ottoman bladder: 6 months continuous use • Stays inflated for up to 3 days • Optional extras: Electric pump and hand pump • Included: Repair kit and carry bag



Branding:

DD 24H

NEW

SIZE INDICATIONS (L X H)	
Assembled	40 x 75cm diameter
Packaged	39 x 12 x 31cm
Weight	1.5kg



75cm



Carry bag included

HOW TO ORDER:

- 1 Extra options:**
- Electric pump
 - Hand pump



ON

POINT OF SALE

Put your brand and your products ON show with BARRON's versatile point-of-sale display stands, a highly durable and manoeuvrable cost-effective marketing tool; or showcase your creative side with our wide range of printed media, available in a variety of professional and fully customisable applications and finishes to suit your individual style, image and need.

POSTER

Features: Digitally printed onto Flute board • Flat or laser cut outs • Single or double sided • 2mm thickness
• Lightweight • Cost effective • Short term promotions • Recyclable • Optional extra: eyelets

NEW

Branding:

DD **24H**

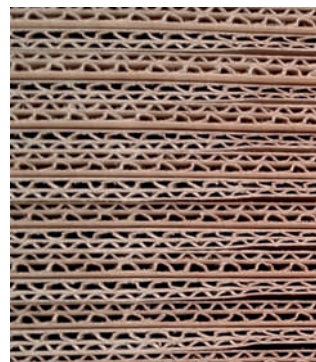
SIZE INDICATIONS (L X H)					
Assembled	600 x 400mm	800 x 600mm	841 x 594mm	1200 x 1200mm	Custom
Units	minimum order of 12 units	minimum order of 6 units	minimum order of 5 units	minimum order of 2 units	minimum order of 2 units - Depending on size



Poster 3d detail



Detail



Flute board detail



Poster back view

HOW TO ORDER:		
1	Select size: • See size indications	2
		Select print options: • Single sided • Double sided
		3
		Finishing options: • Eyelets

HANGING DECALS

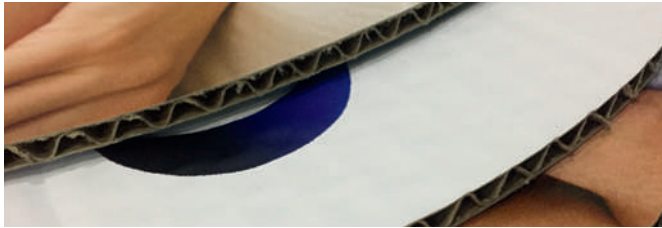
Features: Digitally printed onto Flute board • Double sided • 2mm thickness • Lightweight • Cost effective • Short term promotions • Recyclable

NEW

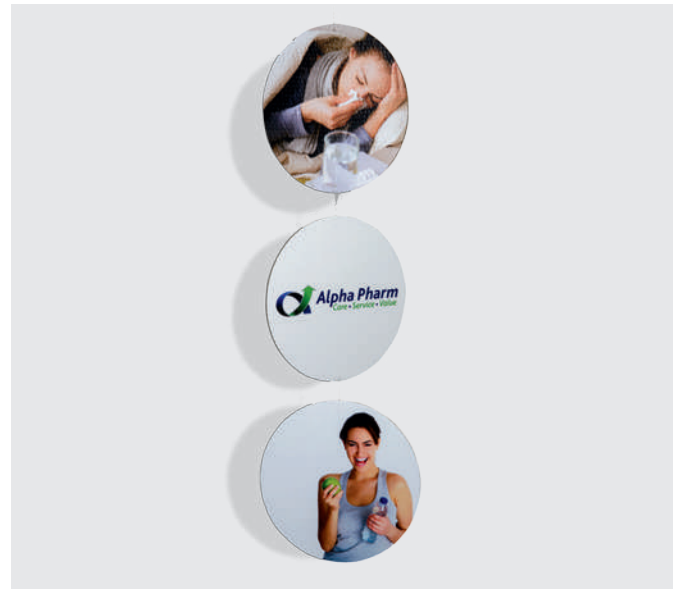
Branding:

DD

SIZE INDICATIONS (L x H)	
Assembled	300 x 300mm
Units	minimum order of 10 units



Flute board detail



STACK CORNERS

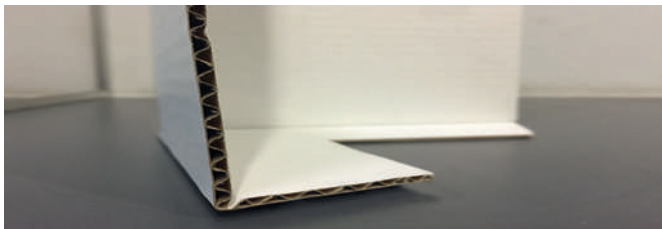
Features: Digitally printed onto Flute board • Single sided • 2mm thickness • Lightweight • Ships flat packed • Cost effective • Short term promotions • Recyclable

NEW

Branding:

DD

SIZE INDICATIONS (L x H)	
Assembled	100 x 100mm
Units	minimum order of 10 units



Back view detail



CUBES

Features: Digitally printed onto Flute board • Single sided • 2mm thickness • Lightweight • Ships flat packed • Cost effective • Short term promotions • Recyclable

NEW

Branding:

DD

SIZE INDICATIONS (L x H)	
Assembled	300 x 300 x 300mm
Units	minimum order of 10 units



Stacked boxes detail





5 STAND

Features: Digitally printed onto eco board • All areas of stand can be printed • Double sided • 16mm thickness
 • Can be creatively shape cut • Edging can be finished with black or grey PVC capping or be left natural
 • Stores multiple light weight products • Lightweight
 • Flat packed • No screws needed

Branding:

DD

SIZE INDICATIONS (L x H x D)	
Assembled	190 x 60 x 30cm
Packaged	225 x 20 x 56cm
Weight	10kg



COCKTAIL STANDEE

Features: Digitally printed onto eco board • All areas of stand can be printed • Double sided • 16mm thickness
 • Edging can be finished with black or grey PVC capping or be left natural • Great for social events • Lightweight
 • Flat packed

Branding:

DD

SIZE INDICATIONS (L x H x D)	
Assembled	60 x 110 x 60cm
Packaged	120 x 10 x 65cm
Weight	6kg



CUSTOM STANDEE

Features: Digitally printed onto e-flute board or eco board • Single sided • Can be completely customised
 • Ideal for mascots and face cut outs for kids
 • Eco board: 10mm and 16mm • Flute board: 2mm thickness • Great for any events • Lightweight

Branding:

DD



PROMO TABLE

Features: Digitally printed onto Bannerweave or PVC • Branding is easily interchangeable • Single sided • Skin wraps around the table and is attached with velcro • Laminated MDF top and shelf • Portable • Aluminium frame • Lightweight • Folds neatly into carry bag



Branding:

DD

NEW

SIZE INDICATIONS (L X H X D)

Assembled	38 x 100 x 38cm
Packaged	108 x 18 x 42
Weight	10kg

HOW TO ORDER:

- Select material:**
 - Bannerweave
 - PVC



Promo table shelf



Carry bag included



Back view detail



KIOSK

Features: Digitally printed onto a vinyl sticker • Single sided
 • Manufactured from plastic and metal • Easily disassembled to fit into a carry bag • Lightweight • Portable • Carry bag included

Branding:

DD

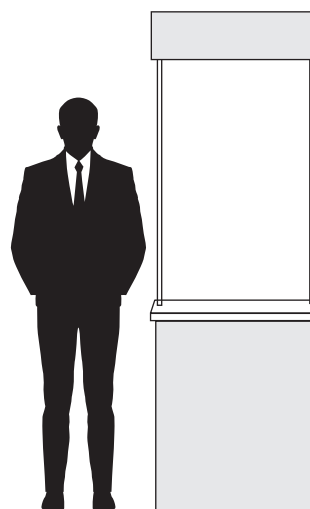
SIZE INDICATIONS (L X H X D)	
Assembled	65,5 x 21,1 x 25cm
Table	164 x 85cm
Header Board	77 x 28cm
Packaged	90 x 90 x 10cm
Weight	10kg



Shelf detail



Carry bag included



655 x 211 x 250mm



Back view



CANVAS PRINTS

Features: Digitally printed onto canvas and stretched onto frame
 • Print option of flush mount or wrap • Single sided • 30mm wooden frame
 • Comes ready assembled • Lightweight • Portable • No brackets included

Branding:

DD

SIZE INDICATIONS (L X H)					
Assembled	A4	A3	A2	A1	A0
Packaged	29 x 21cm	42 x 29cm	59 x 42cm	84 x 59cm	118 x 84cm
Weight	0.75kg	1kg	1.3kg	1.9kg	2.32kg



Stretched flush mount canvas detail



Wrap finish detail

HOW TO ORDER:	
1 Select size: • See size indications	2 Select mounting: • Flush mount • Wrap



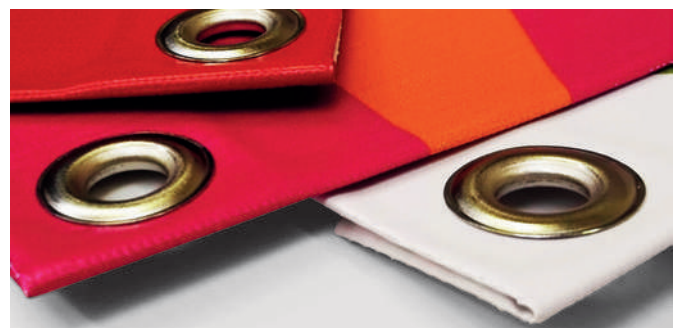
PVC BANNERS

Features: Digitally printed • Single or double sided • PVC options: Black back (single sided), Tarpaulin and Layflat • Indoor or outdoor use • Quick and easy to setup • Cost effective • Finished with eyelets or sleeves

Branding:

DD

SIZE INDICATIONS (L X H)	
Max Height	Max Length
3m	40m



Eyelet finishing

HOW TO ORDER:			
1 Select size: <ul style="list-style-type: none"> • Max length 40m • Max height 3m 	2 Select fabric: <ul style="list-style-type: none"> • Black back PVC • Tarpaulin • Layflat 	2 Select print options: <ul style="list-style-type: none"> • Single sided • Double sided 	4 Select finishes: <ul style="list-style-type: none"> • Eyelets • Sleeves (top and bottom) • Sleeves (left and right) • None



CORREX SIGNS

Features: Digitally printed directly onto corrugated polypropylene sheets • Double or single sided • 2 - 5mm thicknesses • Indoor and outdoor use
 • Water and grease resistant • Lightweight • Cost effective
 • Short term promotions • Optional extra: eyelets

Branding:

DD



Corrugated polypropylene detail



Corrugated polypropylene sheet

HOW TO ORDER:			
1 Select size: • See size indications	2 Select thickness: • 2mm • 3mm • 3.5mm • 4mm • 5mm	3 Select options: • Single sided • Double sided	4 Select finishing: • None • Eyelets

ABS PLASTIC

Features: Digitally printed onto ABS plastic • Double or single sided • ABS plastic • 0.9 to 5mm thicknesses • Indoor and outdoor use • Crack, impact and water resistant • Can be UV stabilized • Heavy duty applications • Lightweight

Branding:

DD



ABS white plastic detail



HOW TO ORDER:

1 Select size <ul style="list-style-type: none"> • See size indications 	2 Select thickness <ul style="list-style-type: none"> • 0.9mm - 5mm 	3 Select print options <ul style="list-style-type: none"> • Single sided • Double sided
---	---	--



PERSPEX

Features: Digitally printed onto a range of colours • Double or single sided • ABS plastic • Completely customisable • Indoor and outdoor use • UV, Crack, impact and water resistant • Heavy duty applications • Lightweight • Does not include installation - wall fixing additional

Branding:

DD

HOW TO ORDER:

- 1 Consultation:**
 - Due to the nature of the product, we recommend that you contact one of our consultants to guide you through the process



FORREX SIGNS

Features: Digitally printed onto forex • Double or single sided • Can be cut into any shape or design • Foam board • Completely customisable • Indoor use • Fire resistant • Rigid • Lightweight • Does not include installation

Branding:

DD



Forex material

HOW TO ORDER:

<p>1 Select size</p> <ul style="list-style-type: none"> • See size indications 	<p>2 Select thickness</p> <ul style="list-style-type: none"> • 1mm • 2mm • 3mm 	<p>3 Select print options</p> <ul style="list-style-type: none"> • Single sided • Double sided
--	--	---



CONTRAVISION

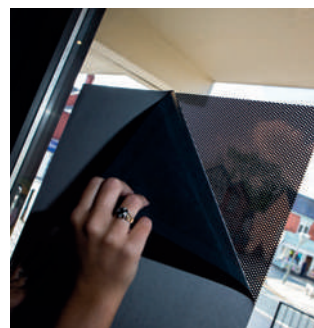
Features: Digitally printed onto one way vision • Single sided • Can be cut into any shape or design • Completely customisable • Indoor or outdoor use • Allow light through the substrate or for protection against the sun • Quick and easy to install • Does not include installation

Branding:

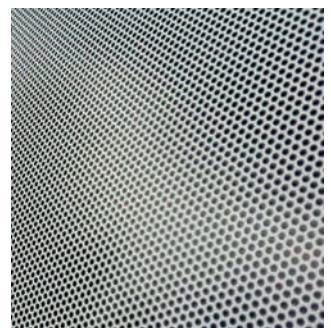
DD

HOW TO ORDER:

<p>1 Consultation:</p> <ul style="list-style-type: none"> • Due to the nature of the product, we recommend that you contact one of our consultants to guide you through the process



Applying of contravision



Material detail



VINYL - WINDOWS

Features: Digitally printed onto vinyl • Double or single sided • Can be cut into any shape or design • Completely customisable • Indoor or outdoor use • Quick and easy to install • Does not include installation

Branding:

DD

HOW TO ORDER:

1 Consultation:

- Due to the nature of the product, we recommend that you contact one of our consultants to guide you through the process



VINYL - FLOORS

Features: Digitally printed onto vinyl • Single sided for floors • Can be cut into any shape or design • Completely customisable • Indoor or outdoor use • Quick and easy to install • Does not include installation • Includes as nonslip function

Branding:

DD

HOW TO ORDER:

1 Consultation:

- Due to the nature of the product, we recommend that you contact one of our consultants to guide you through the process





ON HARDWARE & ACCESSORIES

Keep ON going with BARRON's superior quality and durable hardware. Sourced from all over the world for long-lasting performance.

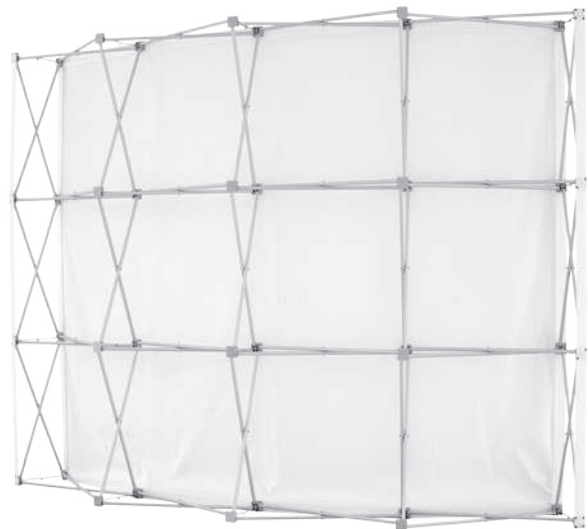
BANNER WALL FRAME

Features: Aluminium frame • Plastic connectors • Includes carry bag
• Sizes: 2.25 x 2.25m, 3 x 2.25m, 4.5 x 2.25m



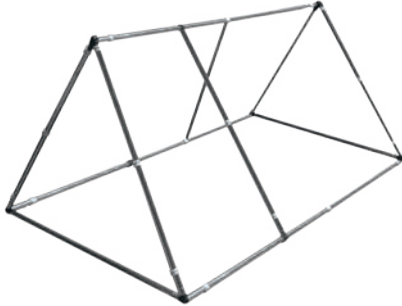
CURVED BANNER WALL FRAME

Features: Aluminium frame • Plastic connectors • Includes carry bag
• Sizes: 2.25 x 2.25m, 3 x 2.25m, 4.5 x 2.25m



A-FRAME BANNER FRAME

Features: Aluminium frame • Plastic connectors
 • Frame is boxed • Sizes: 2 x 1m (one centre crossbar), 3 x 1m (two centre crossbars)



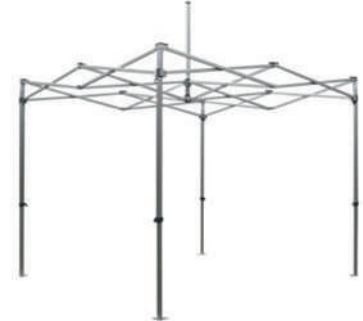
UMBRELLA FRAME

Features: Steel frame • Plastic connectors
 • Frame is boxed • Sizes: 2 x 2m



GAZEBO FRAME

Features: Aluminium or steel frame • Plastic connectors
 • Frame is boxed • Sizes: Steel frame 2 x 2m, 3 x 3m, 3 x 4.5m, Aluminium frame 3 x 3m



TELESCOPIC BANNER FRAME

Features: Aluminium structure sizes: 2m, 3m, 4m
 • Fibreglass structures sizes: 2m, 3m, 4m
 • Supplied with a carry bag



WIND CHEATER BANNER FRAME

Features: Aluminium structure sizes: 2m, 3m, 4m
 • Fibreglass structures sizes: 2m, 3m, 4m
 • Supplied with a carry bag



HARP BANNER FRAME

Features: Aluminium structure sizes: 2m, 3m, 4m
 • Fibreglass structures sizes: 2m, 3m, 4m
 • Supplied with a carry bag



SCISSOR BANNER BASE

Features: Steel base • Can be used for Telescopic, Harp and Wind cheater banners • Size: 50 x 16 x 4cm



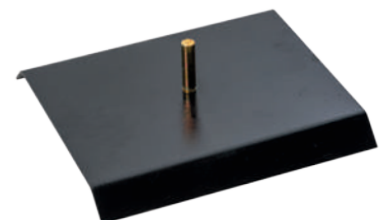
CLUSTER FLAG HARDWARE

Features: Steel base and Aluminium poles • Can be used for the 4 or 5 pole cluster flags • Includes carry bag



INDOOR BANNER BASE

Features: Metal base • Can be used for the Telescopic, Harp and Windcheater banners • Size: 38 x 43 x 3cm



* Hardware might vary depending on availability

WATER BAG FOR BANNER BASE

Features: Water bladder with lid • Can be used with our banner bases • Size: 18 x 17 x 3cm



GROUND SPIKE

Features: Steel spike • Can be used for the Telescopic, Harp and Windcheater banners • Not supplied with a box



BEARING SPIKE

Features: Steel spike • Can be used for the Telescopic, Harp and Windcheater banners • Bearing reduces stress on the banners • Turns with the wind



CEMENT UMBRELLA BASE

Features: Concrete base with metal connector • Size: 51 x 51 x 25cm • Weight: 35kg



RUBBER UMBRELLA BASE

Features: Rubber base with metal connector • Size: 60 x 60 x 18cm • Weight: 30kg



BANNER WALL WING

Features: Fits on the sides of the banner walls • Plastic with velcro sides



GAZEBO TOOLKIT

Features: Includes 4 metal pegs and guide ropes • Includes carry bag



GAZEBO BAG

Features: Carry handles • Styles may vary depending on stock availability



DELUXE GAZEBO BAG

Features: Handle • Durable • Styles may vary depending on stock availability • Only fits the following Gazebos: 2m and 3m



* Hardware might vary depending on availability

DELUXE BANNER WALL BAG

Features: Adjustable handle and roller wheels
 • Durable • Styles may vary depending on stock availability
 • Only fits the following banner walls: 2.25 x 2.25m and 3 x 2.25m



LED LIGHTS

Features: Easy installation • White light • 12w power • 2m length



ELECTRIC PUMP

Features: Product may vary depending on availability



HAND PUMP

Features: Includes 3 connectors • Foot plate for stability • Size 45cm



Hand pump detail

PULL-UP BANNER ECONO BASE

Features: 0.85 x 2m assembled • 85 x 10 x 10cm packaged • Weight 4kg • Lightweight • Portable



PULL-UP BANNER CHROME BASE

Features: 89 x 20 x 8cm • Lightweight • Portable



PULL-UP BANNER BLACK CHROME BASE

Features: 89 x 20 x 8cm • Lightweight • Portable



* Hardware might vary depending an availability



ON

GLOSSARY

GENERAL

- **Chonk:** Rubber edging on a banner wall frame for insertion of fabric.
- **Deluxe:** Made with superior quality material.
- **Econo (Abbreviated from economical):** Made with more economical material.
- **Length:** The measurement of the extent of something from end to end.
- **Height:** The distance from the base to the top.
- **Fabric Frames:** Supplied with heavy duty aluminium frame with 2.5 wall thickness, 42 mm profile with an outer groove.
- **Fabric Frames Econo:** Supplied with light duty aluminium frame with 1.5 wall thickness, 40mm profile with no groove.
- **Corner Set:** 90 degrees steel plates to allow for easy assembly.
- **Solid Panel:** One complete print with no visible joints.
- **Pull up Banner Deluxe:** Printed on PVC supplied with heavy duty base.
- **Pull up Banner Econo:** Printed on PVC supplied with light duty base.
- **Harp Banner Deluxe:** Printed on ultrasheen supplied with fibreglass rod.
- **Harp Banner Econo:** Printed on ultrasheen supplied with aluminium rod.
- **Telescopic Banner Deluxe:** Printed on ultrasheen supplied with fibreglass rod.
- **Telescopic Banner Econo:** Printed on ultrasheen supplied with aluminium rod.
- **Windcheater Banner Deluxe:** Printed on ultrasheen supplied with fibreglass rod.
- **Windcheater Banner Econo:** Printed on uncoated ultrasheen supplied with aluminium rod.
- **Correx:** An extruded twin wall fluted/corrugated polypropylene sheet and offers efficient solutions to a wide variety of applications. It is favoured by industry for its lightweight structure and competitive pricing.
- **Acrylonitrile Butadiene Styrene (ABS):** ABS is one of the most widely used plastics. It has excellent dimensional stability and is easy to paint and glue. Natural (beige) ABS and black ABS are FDA compliant for use in food processing applications.
- **Forex:** Is a lightweight, yet exceptionally strong substrate that has a wide variety of uses. This popular product is known to be a remarkably good print substrate, allowing for vivid prints, and can be used for a range of sleek looking branding and displays.
- **Perspex:** Is a versatile product that is durable, weather resistant and ideal for indoor and outdoor use. Perspex is printed digitally directly onto a range of colours and opacities making perspex an obvious choice when it comes to efficient and attractive signage or displays.
- **Vinyl:** A form of outdoor advertising, printed with eco-solvent, solvent-based inks or UV-curable ink jet inks. These types tend to contain durable pigments, which provide superior weather and UV-fading resistance.
- **ECO Boards:** Standard panels made of natural fibres represent a sustainable and green solution, which can be applied in the construction of buildings as well as the manufacturing of furniture. ECO Boards are best used in the manufacturing of end products, which require a certain degree of structural strength. ECO Boards are a real alternative to concrete, bricks or OSB.
- **Fibreglass:** Is a type of fibre reinforced plastic where the reinforcement fibre is specifically glass fibre. The glass fibre may be randomly arranged, flattened into a sheet (called a chopped strand mat), or woven into a fabric.
- **Eyelet:** A small round hole in PVC or cloth for threading a lace, string, or rope through.
- **Canvas:** An extremely durable plain-woven fabric used for making sails, tents, marquees, backpacks, and other items for which sturdiness is required.
- **Flag Pole Swivel:** A device consisting of two parts, each of which turns around independently, one part of it turns freely and the other by means of a headed pin, allowing for a 90 degrees movement from upright to horizontal position.

PRINTING

- **Screen Printing:** A printing technique whereby a mesh is used to transfer ink onto a substrate, except in areas made impermeable to the ink by a

blocking stencil. A blade or squeegee is moved across the screen to fill the open mesh apertures with ink, and a reverse stroke then causes the screen to touch the substrate momentarily along a line of contact. This causes the ink to wet the substrate and be pulled out of the mesh apertures as the screen springs back after the blade has passed.

- **Digital Printing:** Printing from a digital-based image directly to a variety of media. It usually refers to professional printing where small-run jobs from desktop publishing and other digital sources are printed using large-format inkjet printers.
- **UV Printing:** Ultraviolet (UV) printing is the process of using UV inks instead of traditional inks. Traditional inks are solvent based and dry by allowing chemicals to evaporate over time.
- **PVC (Polyvinyl Chloride):** A highly efficient substrate that allows for high quality prints and caters for any branding requirements.
- **Dye-sublimation:** A printing process that uses heat to transfer dye onto materials such as a plastic, card, paper, or fabric.

INDUSTRY TERMINOLOGY

- **Bleed:** Refers to the printed image extending beyond the trim edge of the fabric or PVC.
- **Bleed Through:** When printing one side of a fabric and image shows through the other side.
- **Bleeding:** Used to describe when inks appear to have run on a print or when two colours have mixed reproducing a different colour other than the required colour.
- **Grammage:** Metric system term for expressing the basic weight of fabric, PVC or paper.
- **Half Tone:** A reproduction of an image of varying tone values attained by printing dots for various sizes.
- **Strike Through or Show Through:** When the ink is printed on one side of the sheet penetrates the paper and is visible on the other side as a mirror image.
- **Tensile Strength:** Maximum force required to break a piece of fabric with a given width under prescribed laboratory conditions.
- **Pixilation:** Used to describe artwork that is not good enough quality to reproduce on a large format printing process.
- **Fading:** Used to describe the quality of the print or inks after being exposed to the elements of light for a number of months.
- **Contamination:** Refers to small ink spots or marks caused by smudging of inks on flag or banner after it has been printed.
- **GSM:** Grams per square. Another term referring to the weight of a piece of fabric measured per square meter.

MATERIALS

- **Bunting:** Traditional flag material woven from 100% polyester spun yarn. This type of material is commonly used throughout the flag industry worldwide.
- **Ultrasheen:** A self-locking 3-yarn warp-knit flag material made from 100% polyester filament yarn with gloss finish. It is lightweight and durable. Due to its construction and speed of production, it is most economical to produce and brings down the cost of flags considerably.
- **Ribtex:** This revolutionary flag material is unique, having been developed to suit extreme conditions and where price is a factor. It is self-locking warp-knit with small-reinforced "holes" and ribs knitted into the material for better airflow and strength. The unique design requires no hems or stitching, further reducing the cost. Ideally suited for vertical flags.
- **Bannerweave:** An exceptionally strong, medium weight 100% polyester woven material specifically for banners. It has a matt finish, which does not reflect light yet colours appear extremely bright.
- **Satin Knit:** A material ideally suited for both screen and digital print. This material looks and feels like satin but is more economical. Ideal for quality indoor point-of-sale material.
- **Pongee:** Used mainly for desk / table flags.
- **PVC:** We use PVC, which can be printed on both sides without the image showing through. This material, which prints well in both spot colours and CMYK.
- **Gazebo Canvas:** Water resistant coated polyester material.

FURTHER INFORMATION

- Artwork may be sent to us via these mediums, on PC & Mac platform
- USB
- Flash Stick
- CD/DVD
- Dropbox
- Email (no larger than 8mb)
- WeTransfer

ACCEPTABLE PROGRAMS SUPPORTED & ACCEPTABLE FILE EXTENSIONS

- Corel Draw x8 - .cdr
- Freehand MX - .fh
- Photoshop CS6 - .psd / .eps / .tiff / hi res .jpg
- Adobe Illustrator CS6 - .ai / .pdf / .eps

NON-ACCEPTABLE FILE EXTENSIONS

- Bmp
- Low Resolution
- Microsoft Word / Excel
- Microsoft PowerPoint
- Paint

FILE PREPARATION FOR LAYOUTS

- All fonts to be converted to curves
- All images to be saved in CMYK format
- Images that are saved to final print size must not be less than 150 dpi
- A4 images to be scanned at a minimum of 600 dpi
- Images that extend off the edge must include bleed (of 100mm all round)
- Mac files to be exported as freehand 9 upwards documents
- Images are to be supplied uncropped

FINISHING - IMPORTANT QUESTIONS TO ASK:

- How many eyelets?
- How far apart?
- Air vents required and how many?
- Dowel stick - diameter?
- Rope required?
- Cable ties required?
- Sleeves?
- Fringing/Tassels?
- Rope and toggle?

RELATIONSHIP CONSULTANT

- Templates available from relationship consultant
- Artwork can be redrawn at a hourly rate
- For colour accuracy we encourage the use of pantone colours

TERMS AND CONDITIONS

- Express orders turn-around time is 24 hours after artwork approval and payment
- Express levy surcharge of 25% of the order value is charged
- All Express Orders are subject to available production capacity
- Express Orders exclude inflatables, gazebos and umbrellas

** All brands and logos, other than those of Barron, depicted in this brochure are used for the purpose of visual presentation only and remain the sole property of the relevant companies, organisations to which they belong.*



www.umbonocorporate.co.za